



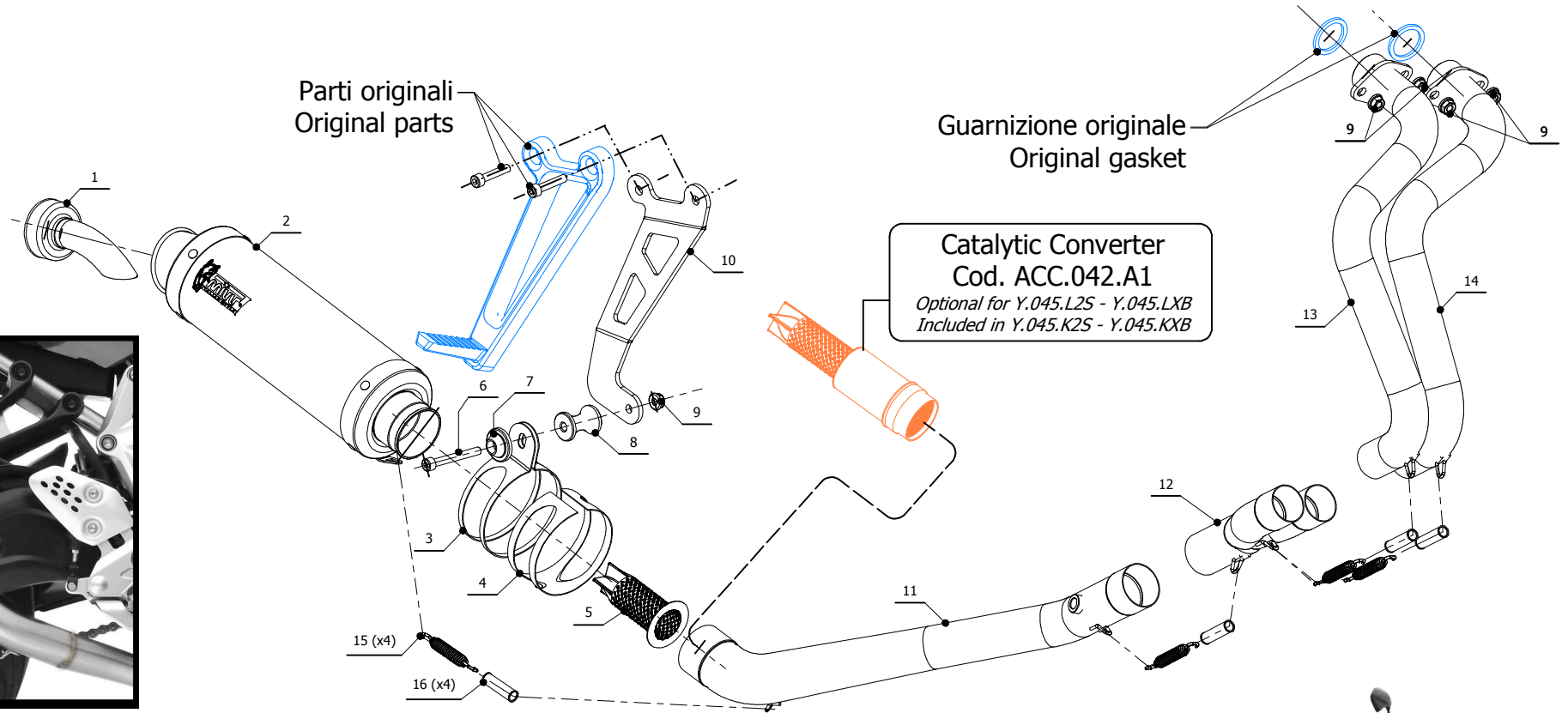
MODEL YAMAHA MT-07 / FZ-07

YEAR 2014 -->

LINE FULL SYSTEM

MUFFLER GP

SCHEMATIC



ELENCO PARTI / PARTS LIST

| # | QTÀ / QTY | DESCRIZIONE / DESCRIPTION | CODICE / CODE |
|----|-----------|---|---------------|
| 1 | 1 | DB killer / DB killer | 50.DK.092.0 |
| 2 | 1 | Silenziatore / Muffler | GP |
| 3 | 1 | Staffa / Bracket | 50.SS.001.0 |
| 4 | 1 | Protezione in gomma per staffa / Rubber protection for bracket | 50.73.040.1 |
| 5 | 1 | Db Killer forato / Drilled DB killer | 50.DK.082.0 |
| 6 | 1 | Vite M8x65 / Screw M8x65 | 50.73.603.1 |
| 7 | 1 | Rondella in alluminio / Aluminium washer | 50.73.063.1 |
| 8 | 1 | Distanziale in alluminio / Aluminium spacer (Øe.30 Øi.8,5 h.40) | 50.SS.191.1 |
| 9 | 5 | Dado M8 flangiato / Flanged nut M8 | 50.73.393.1 |
| 10 | 1 | Staffa / Bracket | 50.SS.840.0 |
| 11 | 1 | Tubo di raccordo / Link pipe | 9773Y045S2 |
| 12 | 1 | Tubo di raccordo 2-1 / Link pipe 2-1 | 9773Y044C1C |
| 13 | 1 | Collettore #2 / Down pipe #2 | 9773Y044C1B |
| 14 | 1 | Collettore #1 / Down pipe #1 | 9773Y044C1A |
| 15 | 4 | Molla media / Mid-size spring | 50.73.359.1 |
| 16 | 4 | Tubo in gomma per molla / Rubber pipe for spring | 50.73.210.1 |



APPLICAZIONI / APPLICATIONS

| CODICE / CODE | SILENZIATORE / MUFFLER | TUBO / PIPE | FASCETTA / CLAM | NOTE |
|------------------------|--|------------------|------------------|-------------------------------------|
| Y.045.L2S Y.045.LXB | CARBONIO / CARBON FIBER STEEL BLACK | INOX / ST. STEEL | INOX / ST. STEEL | CATALYTIC CONVERTER NOT INCLUDED |
| Y.045.K2S Y.045.KXB | CARBONIO / CARBON FIBER STEEL BLACK | INOX / ST. STEEL | INOX / ST. STEEL | CATALYTIC CONVERTER INCLUDED |